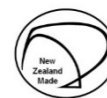


Low pressure cylinders up to 76kPa (7.6m) or open vented

Medium Pressure cylinders up to 120kPa (12m)

Superheat copper barrel cylinders are made in sizes from 10 to 800 litres capacity



Low Pressure (open vent or 76kPa)	Open vent Wetback (dual)	Medium Pressure (120kPa)	LITRES	DIAMETER	HEIGHT	ELEMENT
US10300			10 undersink	300	360	1
US16300			16 undersink	300	500	1
US25370		MG25370	25 undersink	370	500	2
US40460		MG40460	40 undersink	460	500	2
E45460TWIN		MG45460	45	460	600	2
E65460TWIN		MG65460	65	460	800	2
E90460TWIN	WB90460	MG90460	90	460	1040	2
E90540TWIN	WB90540	MG90540	90	540	780	2
E135460TRIPLE	WB135460	MG135460	135	460	1500	2
E135510TRIPLE	WB135510	MG135510	135	510	1190	2
E135540TRIPLE	WB135540	MG135540	135	540	1090	2
E135560TRIPLE	WB135560	MG135560	135	560	990	2
E135610TRIPLE	WB135610	MG135610	135	610	840	2
E180540TRIPLE	WB180540	MG180540	180	540	1410	2
E180560TRIPLE	WB180560	MG180560	180	560	1240	2
E180610TRIPLE	WB180610	MG180610	180	610	1090	2
E180710TRIPLE	WB180710*	MG180710*	180	710	830	2
E225560TRIPLE	WB225560	MG225560	225	560	1540	3
E225610TRIPLE	WB225610	MG225610	225	610	1320	3
E270560TRIPLE	WB270560	MG270560	270	560	1800	3
E270610TRIPLE	WB270610	MG270610	270	610	1530	3
E270710TRIPLE	WB270710	MG270710	270	710	1135	3
E300560	WB300560	MG300560	300	560	1980	3
E300610	WB300610	MG300610	300	610	1680	3
E360610TRIPLE	WB360610	MG360610	360	610	1990	4
E360710TRIPLE	WB360710	MG360710	360	710	1440	4
E450710TWIN	WB450710	MG450710	450	710	1740	4

* Made to order - POA

Larger sizes up to 800 litres available with diameters up to 810mm

NOTE: SAFE TRAYS (CYLINDER TRAYS)

Please note that the NZ Building Code G12 AS2 (amendment 10, January 2017) requires safe trays below all cylinders (ref: G12, AS1, 6.11.3).

**For technical assistance contact us on +64 3 389 9500
Or email us info@superheat.nz**

LOW AND MEDIUM PRESSURE CYLINDER OPTIONS

With Wetback Coils

CODE	DESCRIPTION
COIL25/05	WETBACK - 25MM COIL 5 METRE LENGTH
COIL25/10	WETBACK - 25MM COIL 10 METRE LENGTH
COIL25/15	WETBACK - 25MM COIL 15 METRE LENGTH
COIL25/20	WETBACK - 25MM COIL 20 METRE LENGTH

With Direct Solar

CODE	DESCRIPTION
SOLAR	SOLAR COMPLETE (direct connections + 2 probe pockets)

With Solar Coils including 2 probe pockets

CODE	DESCRIPTION
COIL SOLAR 10	SOLAR COIL 10 METRE OF 20MM DIAMETER
COIL SOLAR 15	SOLAR COIL 15 METRE OF 20MM DIAMETER
COIL SOLAR 20	SOLAR COIL 20 METRE OF 20MM DIAMETER

With Indirect Mains Pressure Coil

CODE	DESCRIPTION
COIL HP180	INDIRECT MAINS PRESSURE COIL - 180
COIL HP270	INDIRECT MAINS PRESSURE COIL - 270
COIL HP360	INDIRECT MAINS PRESSURE COIL - 360

LOW AND MEDIUM PRESSURE CYLINDER ACCESSORIES

CODE	DESCRIPTION
L021	LOW PRESSURE STEM THERMOSTAT 7" & 11"
L022	EWT THERMOSTAT WITH THERMO CUTOUT (MANUAL RESET)
L023	WETBACK CONSUMER ADJ THERMOSTAT
L025	EWT THERMOSTAT AUTO RESET THERM CUTOUT
L026	CONSUMER ADJ THERMOSTAT (0-100°C)
L027	7" STEM THERMOSTAT WITH THERMAL CUTOUT
EL1	1 kW ELEMENT
EL2	2 kW STD ELEMENT
EL3	3 kW STD ELEMENT
EL2-TITN	2 kW TITANIUM ELEMENT
EL3-TITN	3 kW TITANIUM ELEMENT
EL5	5 kW STD ELEMENT
L017	GALVANISED TRAY 660mm DIAMETER
L018	GALVANISED TRAY 800mm DIAMETER
L019	QUICK RECOVERY ELEMENT & T/STAT (2 kW or 3kW)
TANKBCF	40 LITRE COPPER HEADER TANK (Round) 460 x 300 HIGH, Including BALLCOCK & COPPER FLOAT
TANKSQUBCF	20 LITRE COPPER HEADER TANK (Rectangle) 460 x 170 x 290 HIGH, Including BALLCOCK & COPPER FLOAT
TANKTRAY	RECTANGLE HEADER TRAY 560 x 220 (for TANKSQUBCF)

Other square and rectangular trays can be made to order

LOW PRESSURE, STAINLESS STEEL BARREL, DIRECT WETBACK CYLINDERS (open vented)



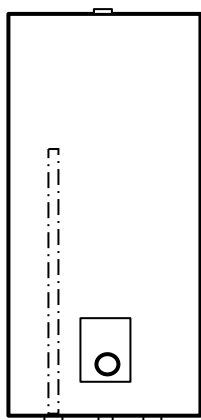
CODE	LITRES	DIAMETER	HEIGHT	kW
WBSS195	195	560	1300	3
WBSS250	250	580	1600	3
WBSS280	280	580	1800	3
WBSS300	300	580	1920	3

Other sizes with diameters 610, 710 & 810 also available, made to order.

DIRECT WETBACK CODE: WBSS

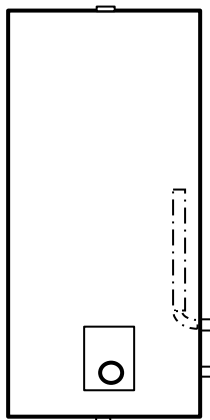
DIRECT WETBACK CYLINDERS MUST BE INSTALLED OPEN VENTED

NOTE: All wetback connections 25mm (1")



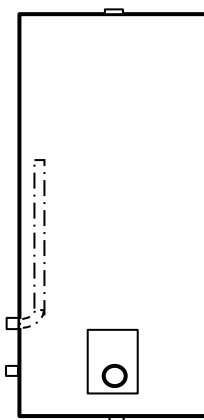
BOTTOM ENTRY

Bottom entry cold inlet



SIDE RIGHT SR

Side wetback with fixed riser
Bottom or side entry cold inlet



SIDE LEFT SL

Extra time is required for the manufacture of custom made cylinders